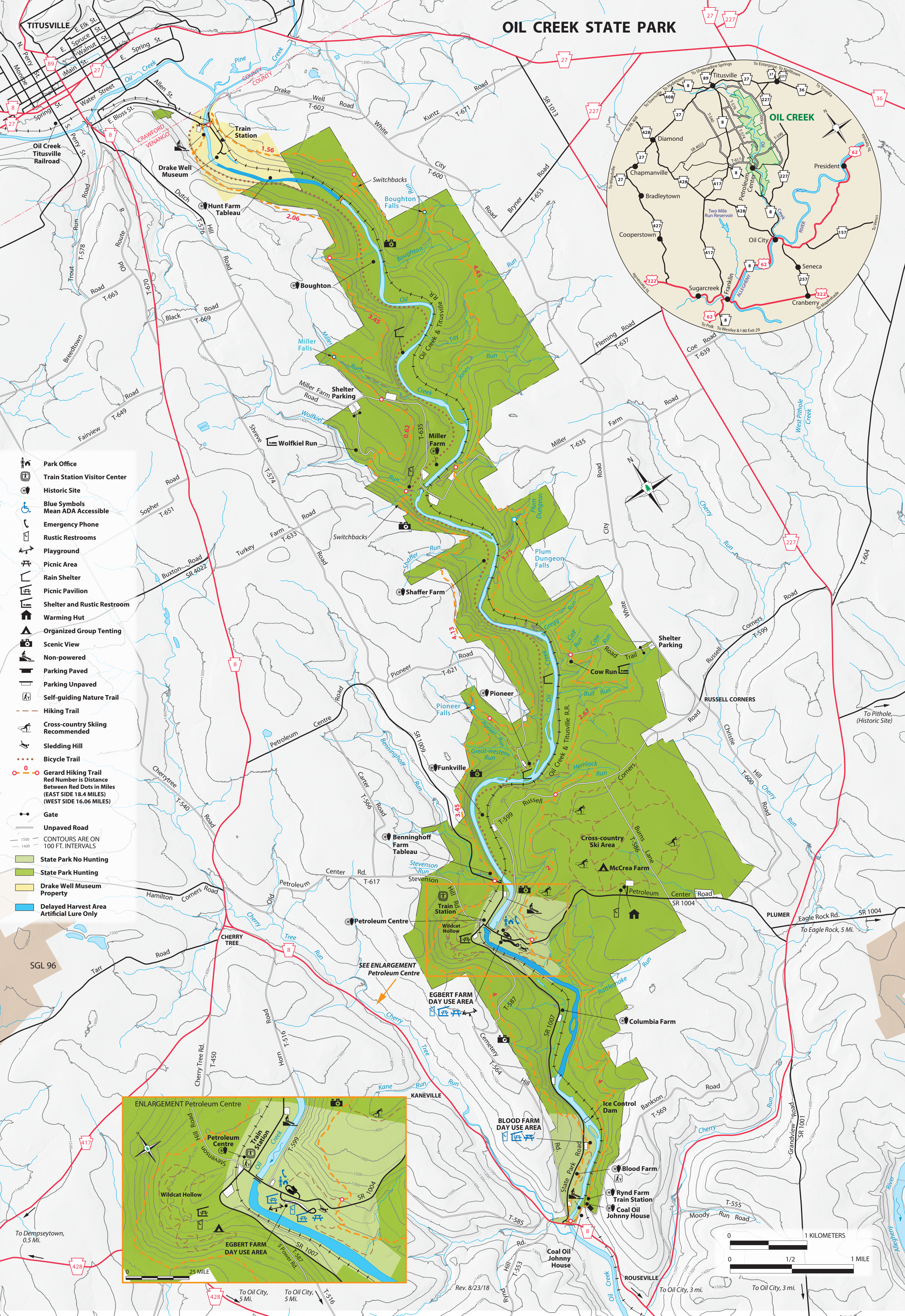
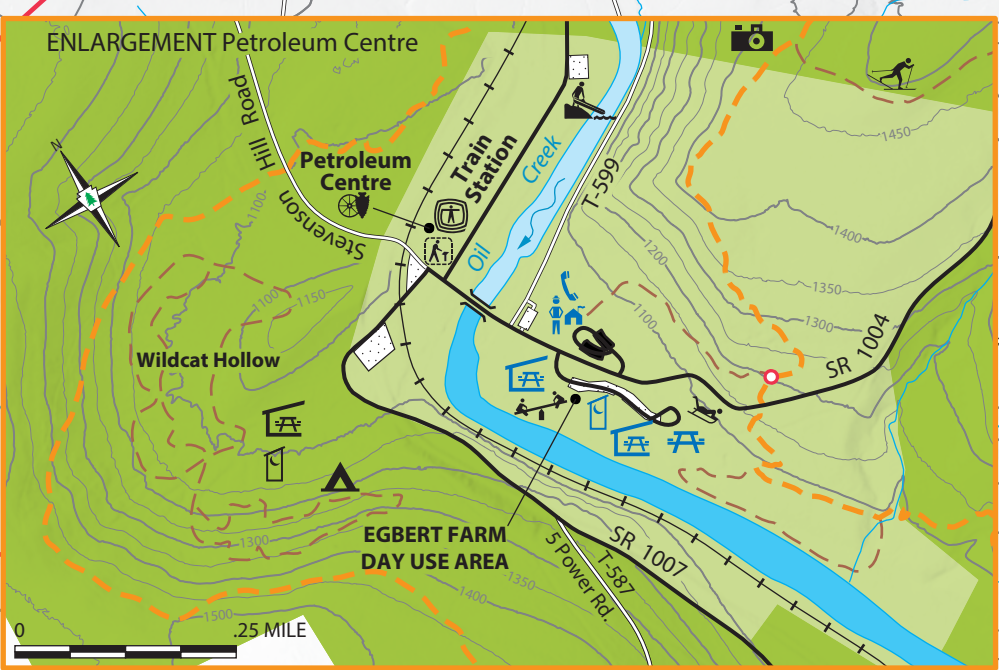


OIL CREEK STATE PARK



- Park Office
- Train Station Visitor Center
- Historic Site
- Blue Symbols Mean ADA Accessible
- Emergency Phone
- Rustic Restrooms
- Playground
- Picnic Area
- Rain Shelter
- Picnic Pavilion
- Shelter and Rustic Restroom
- Warming Hut
- Organized Group Tenting
- Scenic View
- Non-powered
- Parking Paved
- Parking Unpaved
- Self-guiding Nature Trail
- Hiking Trail
- Cross-country Skiing Recommended
- Sledding Hill
- Bicycle Trail
- Gerard Hiking Trail
Red Number is Distance Between Red Dots in Miles
(EAST SIDE 18.4 MILES)
(WEST SIDE 16.06 MILES)
- Gate
- Unpaved Road
- CONTOURS ARE ON 100 FT. INTERVALS
- State Park No Hunting
- State Park Hunting
- Drake Well Museum Property
- Delayed Harvest Area
Artificial Lure Only



To Dempseytown, 0.5 Mi.

To Oil City, 5 Mi.

To Oil City, 5 Mi.

To Oil City, 3 mi.

To Oil City, 3 mi.

To Eagle Rock, 5 Mi.

To Pithole (Historic Site)

Rev. 8/23/18