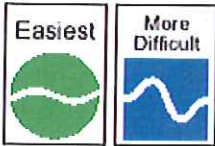


Hiker Guide

- This trail is single-track on the western ridge, and double-track on the eastern ridge. The double-track trail is a shared-use trail accommodating both hiking and cross-country skiing. The blazing scheme is yellow along the main hiking trail, white along the connector trails, and red along the cross-country ski trail. The trail difficulty rating and blazing scheme are pictured below.

- Trail difficulty rating:**
Easiest to more difficult



- Trail Blazing**



Hiker Guide (continued)

- Intended use**



This trail is designed and sustainable for foot traffic.

- Camping policies:**
Camping reservations are required for the camping shelters at Wolfkiel Run and Cow Run. Reservations can be made by calling the park office (814) 676-5915 or by visiting Oil Creek State Park online at www.visitparks.com
- Wilderness ethics**
For the preservation of the habitat, it is encouraged that hikers only carry necessities and carry out what was carried in, leaving no trace. Minimal impact is encouraged.
- Nature's nuisance**
Please respect wildlife and be aware of hazardous plant life while on the trail. Stinging nettle and poison ivy are present. Our park staff suggests keeping your dog leashed.



Hiker Guide (continued)

- Avoid getting lost**
Be prepared and leave a trip plan with someone in case of an emergency, indicating arrival and departure dates. Also, please check in at the park office before departing for your hike. Following trail ethics remain on the trail at all times, in the event you become disoriented. This will aid in search and rescue efforts.
- Suggested gear**
A few things to consider bringing on the trail:
 - Hiking poles
 - Daypack
 - Water
 - Map and compass
 - Food (light snack or meal)
 - Rain gear
 - Insect repellent
 - Waterproof matches
 - Flashlight and extra batteries
 - Pocket knife
 - First aid kit
 - Emergency blanket
 - Hiking boots and socks

For a full gear guide visit the Friends of Oil Creek website.

Park History

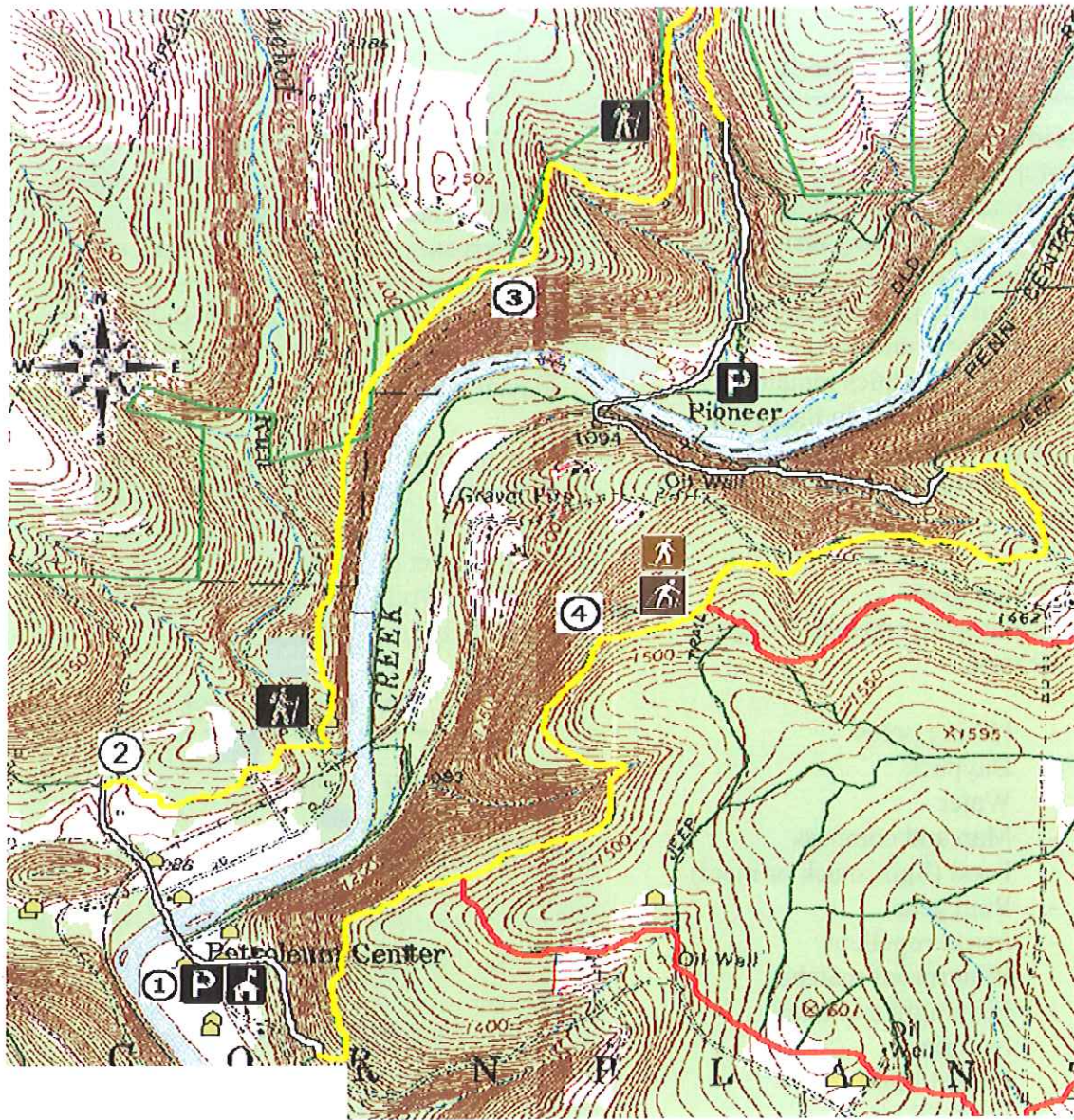
Oil Creek State Park is one of the five state parks established through the efforts of the Western Pennsylvania Conservancy. The 7,243 acre tract of land preserves 12.0 miles of the winding gorge created approximately 10,000 years ago by the draining of an ice-dammed glacial lake.







The discovery of oil in the valley on August 27, 1859 marked the birth of the world's oil industry. Throughout the park, expect to see remnants of abandoned oil wells, reminders of the region's rich oil history.

Points of interest

- Egbert Oil Office
- Petroleum Center train station and visitor center
- Pioneer scenic vista
- Benninghoff Farm overlook

| | | |
|-------------------------------|----------------|------------|
| CONTINUE STRAIGHT | START OF TRAIL | RIGHT TURN |
| | | |
| TURN LEFT TO A DOWNHILL TRAIL | END OF TRAIL | LEFT TURN |
| | | |



-  Park office
-  Parking area
-  Hiking trail
-  Trail shares use with cross-country skiing in winter
-  Trail shares use with snowshoes in winter
-  ② Point of interest



Local Eateries

For more information

The Friends of Oil Creek State Park

Email: friendsocsp@gmail.com

www.orgsites.com/pa/focsp



Petroleum Center Loop Trail
Gerard Hiking Trail



Trail length:
7.16 miles
37,650 feet
11,550 meters

Elevation change: Highest point- 1470 ft.
Lowest point- 1110 ft.
Difference- 360 ft.

Note: Anticipate 2 to 3 miles per hour on even ground, and add 20 minutes per 500 feet of elevation change.

Suggested trailhead and parking:
Park office: N41°, 30.913', W079°, 40.862'

Pioneer: